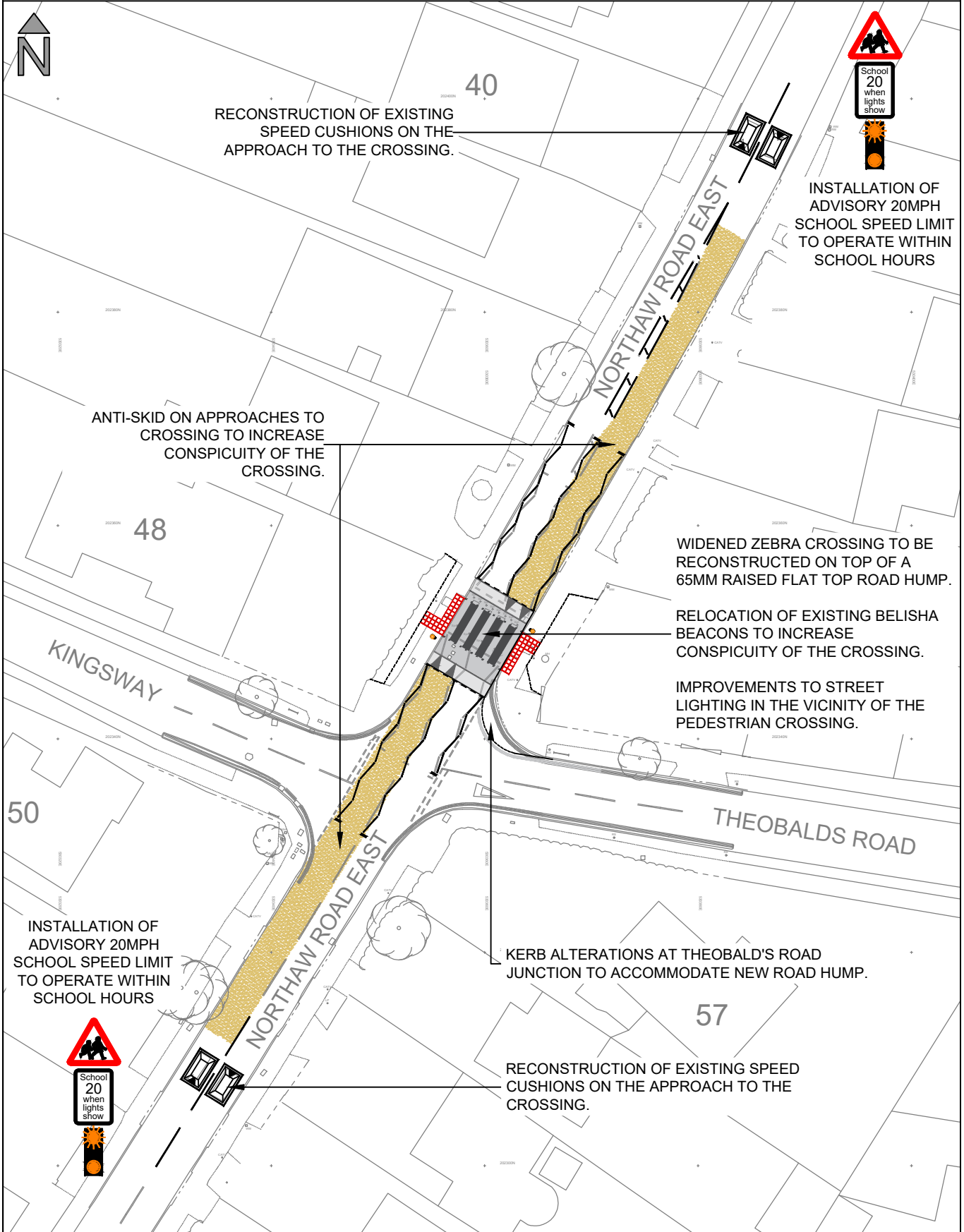


# NORTHAW ROAD EAST, CUFFLEY



RECONSTRUCTION OF EXISTING SPEED CUSHIONS ON THE APPROACH TO THE CROSSING.

ANTI-SKID ON APPROACHES TO CROSSING TO INCREASE CONSPICUITY OF THE CROSSING.

INSTALLATION OF ADVISORY 20MPH SCHOOL SPEED LIMIT TO OPERATE WITHIN SCHOOL HOURS

WIDENED ZEBRA CROSSING TO BE RECONSTRUCTED ON TOP OF A 65MM RAISED FLAT TOP ROAD HUMP.

RELOCATION OF EXISTING BELISHA BEACONS TO INCREASE CONSPICUITY OF THE CROSSING.

IMPROVEMENTS TO STREET LIGHTING IN THE VICINITY OF THE PEDESTRIAN CROSSING.

INSTALLATION OF ADVISORY 20MPH SCHOOL SPEED LIMIT TO OPERATE WITHIN SCHOOL HOURS

KERB ALTERATIONS AT THEOBALD'S ROAD JUNCTION TO ACCOMMODATE NEW ROAD HUMP.

RECONSTRUCTION OF EXISTING SPEED CUSHIONS ON THE APPROACH TO THE CROSSING.



Farnham House  
Six Hills Way  
Stevenage, Herts  
SG1 2ST  
[www.hertfordshire.gov.uk/highways](http://www.hertfordshire.gov.uk/highways)

© Crown copyright and database rights to 2024 Ordnance Survey AC0000849954.  
You are permitted to use this data solely to enable you to respond to, or interact with the organisation that provided you with the data. You are not permitted to copy, sub-license, distribute or sell any of this data to third parties in any form.

Project  
**SAFER ROUTES TO SCHOOL  
NORTHAW ROAD EAST, CUFFLEY  
PEDESTRIAN CROSSING IMPROVEMENTS**

Sheet  
**INFORMAL CONSULTATION**

Drawn	Designed	Checked	Approved	Approved Date
IR	IR	TD	SS	Mar 26
Signature	Signature	Signature	Signature	Scale(s)
				NTS

Project No.	Sheet No.	Revision
HC ITP260007 CON 001	1 of 1	0